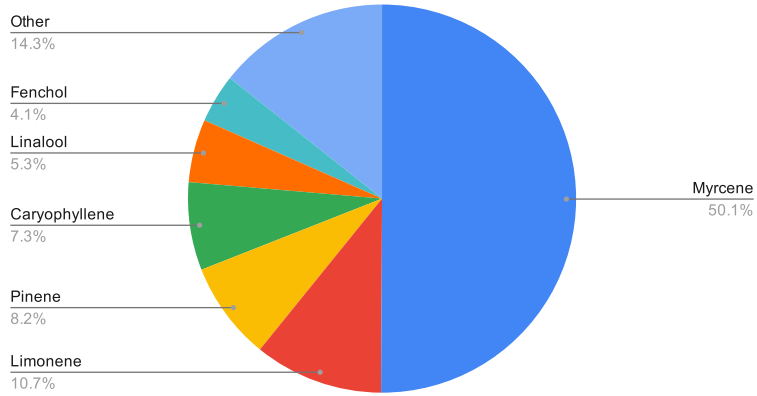


TOP SIX TERPENES TEST RESULTS

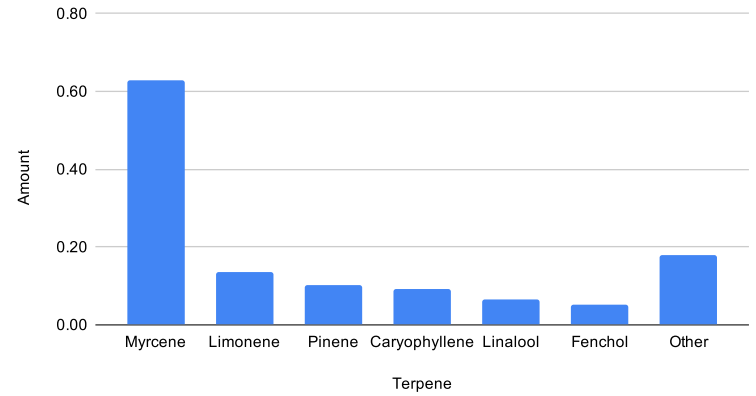
[COA 709LG](#)

| Terpene | Amount |
|------------------------|-------------|
| Myrcene | 0.63 |
| Limonene | 0.14 |
| Pinene | 0.10 |
| Caryophyllene | 0.09 |
| Linalool | 0.07 |
| Fenchol | 0.05 |
| Other | 0.18 |
| Total Terpene % | 1.26 |

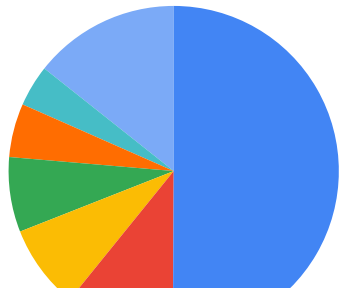
Tested Terpene Profile Ratio



Tested Terpenes as Percent of Total Mass



Tested Terpene Profile Ratio



| |
|--|
| |
| |
| |
| |
| |



- Myrcene
- Limonene
- Pinene
- Caryophyllene
- Linalool
- Fenchol
- Other

| | | | | | | |
|--|--|--|--|--|--|--|
| | | | | | | |
| | | | | | | |
| | | | | | | |
| | | | | | | |